

Reviewed 7<sup>th</sup> of October 2020

**Water Related Internal Governance**

The Inghams Bolivar Plant Manager has overall accountability for water stewardship on the site. Production Managers and Supervisors are responsible for the use of water and discharge of wastewater in their areas of responsibility. The Engineering Manager and Process Technicians maintain the operation of the DAF system and AZZO tracking system. The Health, Safety and Environment Manager monitors compliance to water-related laws and regulations and manages relationships with external stakeholders.

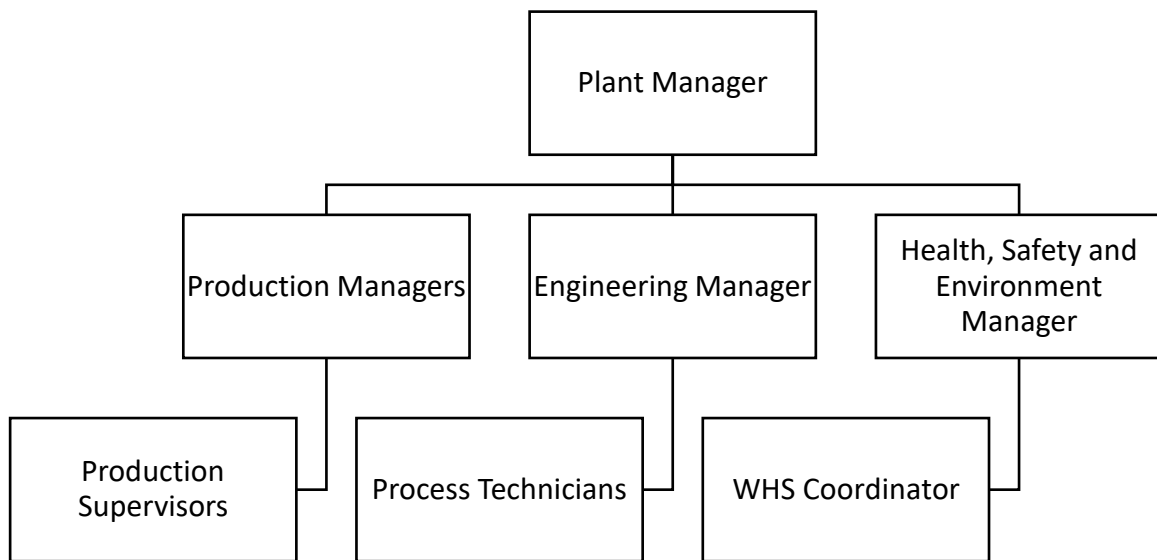


Figure 1: Water -related internal governance

## Efforts to Address Shared Water Challenges – Inghams Bolivar

Water Challenge	SMART Targets	Actions to Address	Stakeholder Engagement
Improve Water Intensity	Improve water usage on site with a target of 15.9L/Bird	Work to EMP plan which will address water saving improvements for the site with goal of achieving 15.9L/Bird target.	Department for Environment and Water City of Salisbury Council Traditional Landowners - Kurna People
Water quality in the Barker Inlet System	Ensure DAF waste meets license conditions.  No hazardous escape of waste via the storm water system to local creek.	The site discharges directly into the Smith and Adams creek system which has a direct impact to the Barker Inlet system.  Discharge of contaminated discharge could result in external regulatory authority action against the site.	Department for Environment and Water City of Salisbury Council Traditional Landowners - Kurna People
Waterways and wetlands 'Water Important Areas' management and improvement goals of Governmental and non-governmental agencies.	<b>Improve the health of vegetation and fauna</b>  Participate in council arranged volunteer days aimed at improving local water ways.	Development of the site Water Stewardship Plan.  Participate in tree planning volunteer days.	City of Salisbury Council Department for Environment and Water Traditional Landowners - Kurna People Conservation Volunteers Australia
Limited capacity of water resources and increasing water costs for community.	Improve water usage on site with a target of 15.9L/Bird	Best practice water intensity and water efficiency.  Integrated water management	SA Water
Climate variability Extremes weather events Drought water scarcity of larger catchment – cyclic (currently no scarcity)	Meet Plant KPI targets.	Ongoing management of utility us and the greenhouse gas emission through the site EMP.	SA Water City of Salisbury Council Department for Environment and Water Traditional Landowners - Kurna People
Sustainable aquifer water supply	Improve aquifer water supply	Development of the site Water Stewardship Plan	EPA City of Salisbury Council Department for Environment and Water

Table 1: Efforts to Address Shared Water Challenges

**Summary of Water Stewardship Plan Progress – Inghams Bolivar**

Water Challenge	Actions to Address	Progress Status
Improve Water Intensity	Use less water per Bird processed or tonne of final product	Not achieved – Target of 15.8 L/Bird was not achieved due to a number of factors, the biggest being an overly ambitious target. The site experienced an increase in production as well as increased site trailer wash load. The FY20 water usage number was 17.94 L/Bird.
Maintain a healthy streamside environment	<p>Monitor storm water discharge to ensure compliance.</p> <p>Chemical handling training.</p> <p>Spill kit training.</p> <p>Maximo actions to review storm water discharge gate for effective operation.</p> <p>Participate in volunteer days to help community groups and local council improve local wetlands and water ways.</p>	<p>Monitor storm water discharge to ensure compliance – 100% compliant</p> <p>Chemical handling training.</p> <p>Spill kit training- 100% compliant</p> <p>Maximo actions to review storm water discharge gate for effective operation – 100% compliant.</p> <p>Participate in volunteer days to help community groups and local council improve local wetlands and water ways – Not achieved due to Covid 19 restrictions..</p>
Contribute to improved catchment governance	No trade waste non-compliances.	No trade waste non-compliances to be issued to the site for DAF breeches – 100% compliant

Table 2: Summary of Water Stewardship Plan Progress